

**LAIKO**



**ASZ**

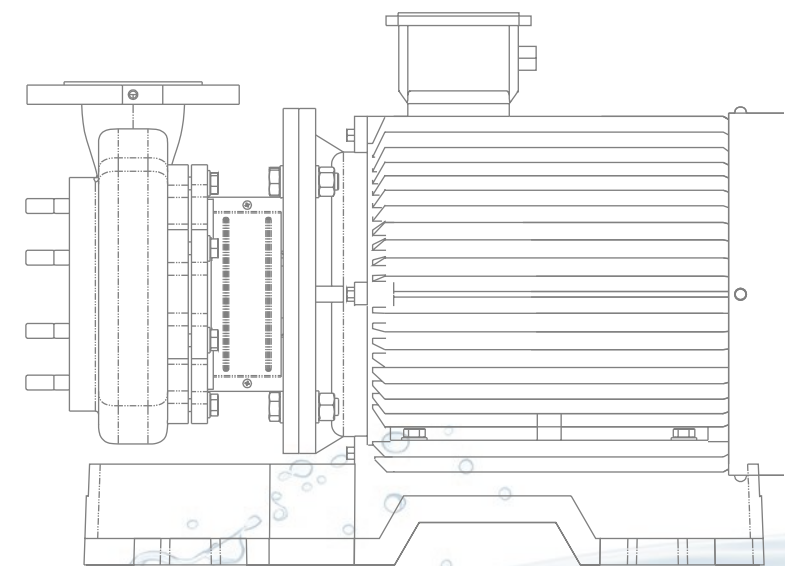
**FLUOROPLASTIC  
CENTRIFUGAL PUMP**

# LAIKO

## ASZ

FLUOROPLASTIC CENTRIFUGAL PUMP

PUMP AND SYSTEM SOLUTION PROVIDER



Superior in Pump, Superior in Energy-Saving.

[www.Laikopump.com](http://www.Laikopump.com)





**LAIKO** Laiko Pump  
Pump and System Solution Provider

LAIKO Pump(Zhejiang) Co., Ltd. is a subsidiary of Zhejiang Dayuan Pumps Industrial Co., Ltd. (Stock code: 603757), focusing on the research and manufacturing of energy-saving pumps.

LAIKO's applications cover the fields of construction, municipal, and industrial sectors. Currently, we have product lines including Inline Multistage Pumps, Inline Circulation Pumps, Horizontal Multistage Pumps, Cold and Hot Water Circulation Pipeline Pumps, Single-Stage Centrifugal Pumps, Standard Centrifugal Pumps, Stainless steel Horizontal Single-Stage Centrifugal Pumps, Submersible Sewage Pumps, and Immersed Multistage Centrifugal Pumps. Our products are exported to many countries and regions in Europe, America, and Asia, meeting local legal requirements and obtaining recognition from clients.

A standard research and development, production, sales, and service system has laid the core competitiveness and sustainable development space for LAIKO. Reliable product quality and thoughtful after-sales service have earned LAIKO widespread reputation.

LAIKO maintains a pioneering spirit, always adheres to the concept of technological innovation, and never stops exploring energy-saving endeavors!

**Research and manufacturing of energy-saving pumps, providing pump and system solutions**

With over 34 years of accumulated strength, we have formed an alliance with top domestic water pump research and development, production, sales, and technical teams, Established Zhejiang Laiko Pump Industry Co., Ltd. (referred to as Zhejiang Leike), with comprehensive strength ranking among the top in the industry.

The second-generation green intelligent factory of Industry 4.0 standard covers an area of nearly 200 acres, with an annual output of over 7 million units and a total investment of over 1 billion yuan.

Zhejiang Laiko has established a comprehensive sales and service network nationwide, with direct offices in major cities. Our products are exported to multiple countries and regions in Europe, America, and Asia. China Laiko pumps globally.







## R&D STRENGTH

<b>346</b>	<b>29</b>	<b>242</b>	<b>75</b>	<b>6</b>
Domestic patents	Invention Patent	New utility patent	Appearance patent	Overseas patents

As a brand under Dayuan Pump Group, we have a strong foundation with over 177 R&D personnel and more than 352 patents. Our products have been honored with titles such as "Zhejiang Famous Brand Product" and "Zhejiang Export Famous Brand," and are exported to multiple countries and regions across Europe, America, and Asia. Our comprehensive strength ranks among the top in the industry. Through years of continuous investment in research and development, we have established a significant technological innovation advantage.



## SERVICE COOPERATION

We have established offices in major cities across the country, supported by a professional and efficient service team. From consultation, purchase, after-sales, to maintenance, we provide high-quality, professional, timely, and attentive services at every stage.

Guided by the principle of "wholehearted dedication and customer-first," we respond quickly to customer needs, offering precise product recommendations and tailored solutions. Our comprehensive and full-cycle services ensure a worry-free experience for our customers.

SERVICE TENET: With all our heart and soul, Putting customers first

SERVICE TENET: Rapid response, Precise solution

SERVICE OBJECTIVES: Efficient O&M, Win-Win Cooperation





# LAIKO

## ASZ

Fluoroplastic Centrifugal Pump



Superior in Pump, Superior in Energy-Saving.  
[www.laikopump.com](http://www.laikopump.com)

## ASZ

Fluoroplastic Centrifugal Pump

The ASZ series fluoroplastic centrifugal pump is a single-stage single suction centrifugal pump, with the axial direction being the suction port and the axial direction being the discharge port; Suitable for any concentration of acid, alkali, salt solution, strong oxidant, organic solvent and other highly corrosive media;

The structure is simple, and the pump shaft and impeller are directly connected; Easy to connect, both the inlet and outlet are standard flange connections; The overcurrent components of the pump are made of fluoroplastics (F26, F46), and the auxiliary parts are made of castings (HT200).

A thin medium without solid particles or fibers;

Medium temperature: -20 °C~120 °C

Maximum medium density:  $1.35 \times 10^3 \text{ kg/m}^3$

Maximum ambient temperature: +40 °C

Altitude: up to 1000m

Maximum working pressure :10 bar

### APPLICATION FIELD

Petroleum  
Chemical industry  
Pesticides  
Pickling  
Dyestuff  
Papermaking  
Electroplate

### TECHNICAL DATA

Flow range: 2.2~60m<sup>3</sup>/h

Head range: 20~50m

Power range: 1.1~18.5kW

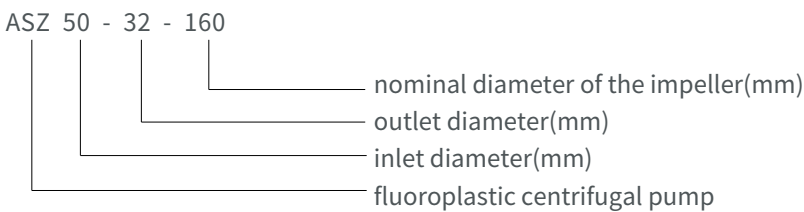
The motor is a fully enclosed, air-cooled two-stage motor

Protection level: IP55

Insulation level: F

Standard voltage: 50Hz, 3×380V

Model Description



Structural Features

The ASZ series pump is a single-impeller centrifugal pump. Its axial direction serves as the suction port, and the radial direction serves as the discharge port.

It has a simple structure. The pump shaft and the impeller are directly connected.

It is convenient to connect. Both the inlet and the outlet are connected with standard flanges.

The flow passage components are made of fluoroplastics (F26, F46), and the auxiliary parts are made of castings (HT200).

Typical Application

Strongly corrosive media such as acid, alkali, and salt solutions at any concentration, strong oxidants, and organic solvents.

Industries such as petroleum, chemical industry, pesticides, pickling, dye, papermaking, and electroplating.

Curve Conditions

1. The curve tolerance complies with the standard of ISO9906, Appendix A.
2. All curves are based on measurements at 50Hz, 3×380V with the motor running at constant speeds of 2900rpm.
3. All measurements are carried out with water that is free of gas and at a temperature of 20°C. The curve is applicable to a kinematic viscosity of 1 mm<sup>2</sup>/s.
4. Refer to the performance range of the bold curve when using the pump to prevent the motor from being overloaded due to excessive flow rate.
5. When the density of the liquid conveyed by the pump exceeds the range of operating conditions, a motor with a higher output power must be used accordingly.

Motor

Fully enclosed standard air-cooled two and two-pole standard motors

Protection level: IP55

Insulation level: F

Standard voltage: 50Hz, 3×380V

Performance Curve

Q/H: It represents the flow rate and head curve at the rated rotational speed.

Power curve: P represents the input power when the density of the medium is 1×10<sup>3</sup> kg/m<sup>3</sup>.

Efficiency curve: Eta represents the efficiency of the pump.

Installation Conditions

The installation of the pump should ensure that it is not affected by the tension of the system pipeline during use.

The pump should be firmly fixed on a stable and level base.

To ensure the normal operation of the motor, the pump should be installed in a location with good ventilation conditions and protected from freezing.

The electrical wiring device should ensure that the pump is protected from damage caused by phase loss, unstable voltage, electric leakage, and overload.

Operating Conditions

Thin medium free of solid particles or fibers

Medium temperature: -20°C~80°C

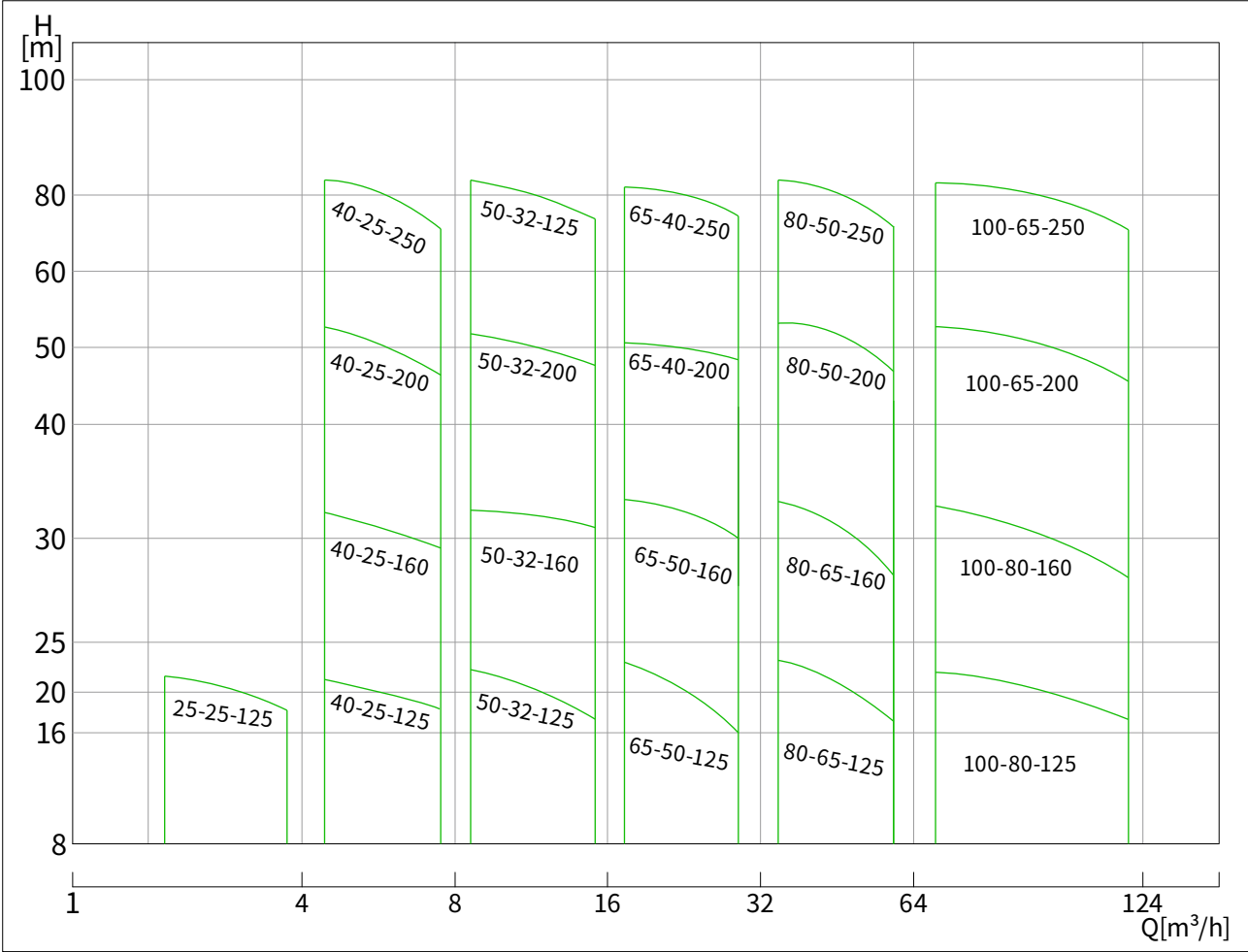
Medium density: up to 1.35×10<sup>3</sup>kg/m<sup>3</sup>

Environment: up to +40°C

Altitude: up to 1000m

Maximum system pressure: 10bar

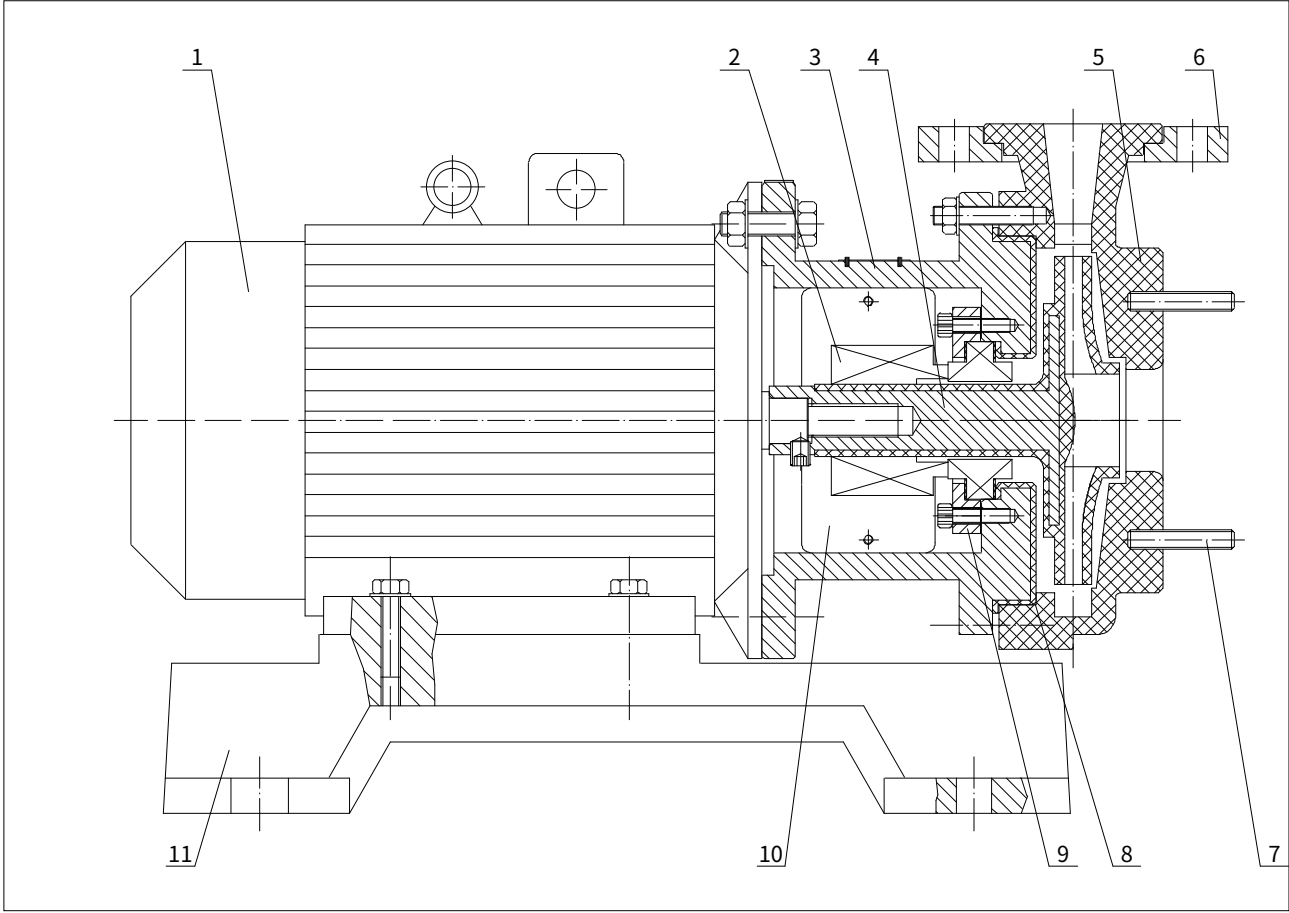
Performance Range



Performance Parameters Form

Model	Rated flow[m³/h]	Rated head[m]	Flow usage range[m³/h]	Maximum pressure[bar]	Motor power[kw]	Maximum efficiency[%]
ASZ25-25-125	3.2	20	2.2~3.8	2.1	1.1	27
ASZ40-25-125	6.3	20	4.4~7.6	2.1	1.5	40
ASZ40-25-160	6.3	32	4.4~7.6	3.3	3	33
ASZ40-25-200	6.3	50	4.4~7.6	5.1	5.5	25
ASZ40-25-250	6.3	80	4.4~7.6	8.2	11	22
ASZ50-32-125	12.5	20	8.8~15	2.3	3	44
ASZ50-32-160	12.5	32	8.8~15	3.3	4	51
ASZ50-32-200	12.5	50	8.8~15	5.1	7.5	40
ASZ50-32-250	12.5	80	8.8~15	8.2	15	35
ASZ65-50-125	25	20	17.5~30	2.1	4	55
ASZ65-50-160	25	32	17.5~30	3.3	5.5	56
ASZ65-40-200	25	50	17.5~30	5.1	11	51
ASZ65-40-250	25	80	17.5~30	8.2	18.5	43
ASZ80-65-125	50	20	35~60	2.6	7.5	62
ASZ80-65-160	50	32	35~60	3.6	11	62
ASZ80-50-200	50	50	35~60	5.4	18.5	63
ASZ80-50-250	50	80	35~60	8.2	30	59
ASZ100-65-200	100	50	70~120	5.1	30	68
ASZ100-65-250	100	80	70~120	8.2	45	62
ASZ100-80-125	100	20	70~120	2.1	15	64
ASZ100-80-160	100	32	70~120	3.3	18.5	68

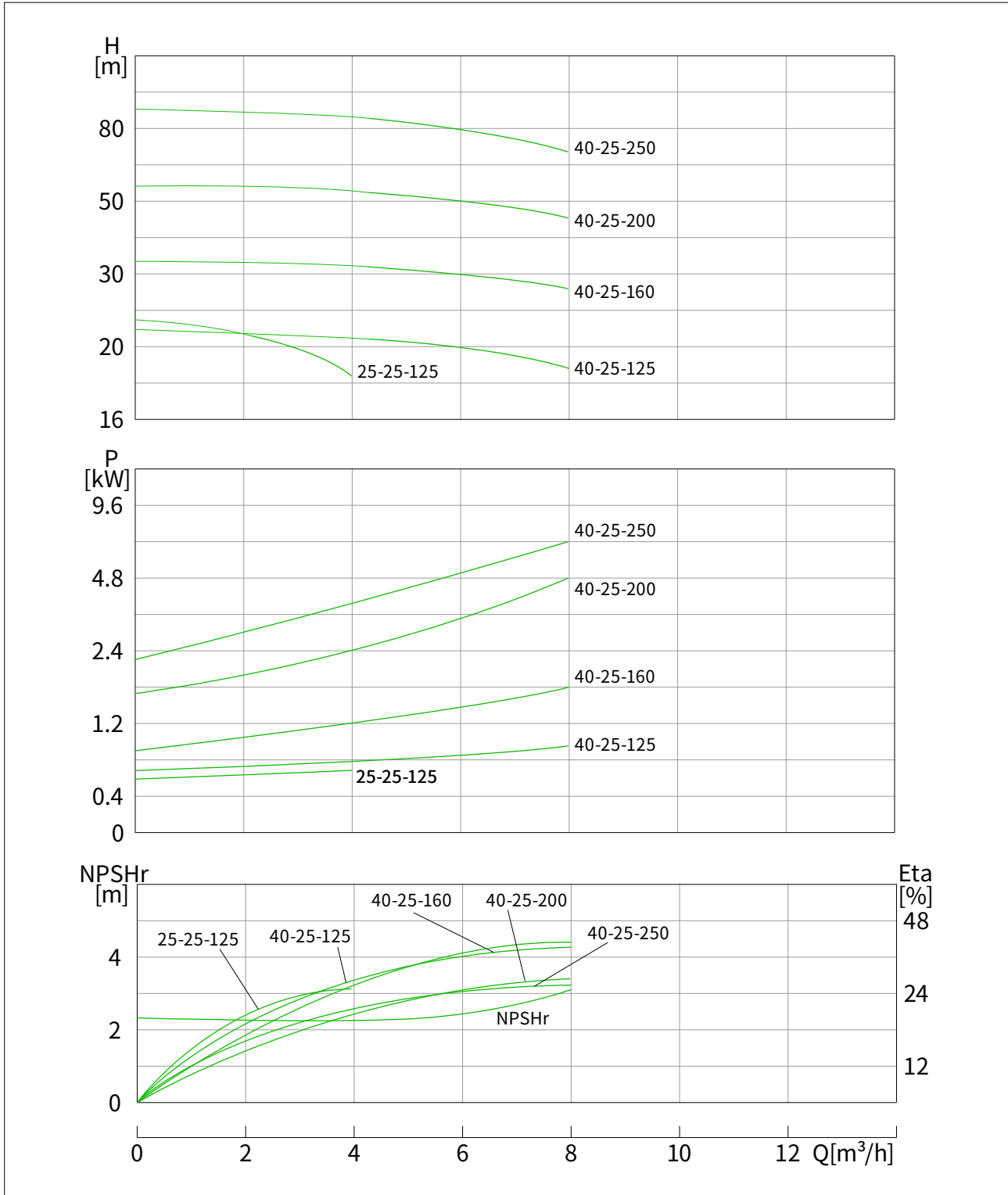
Sectional View



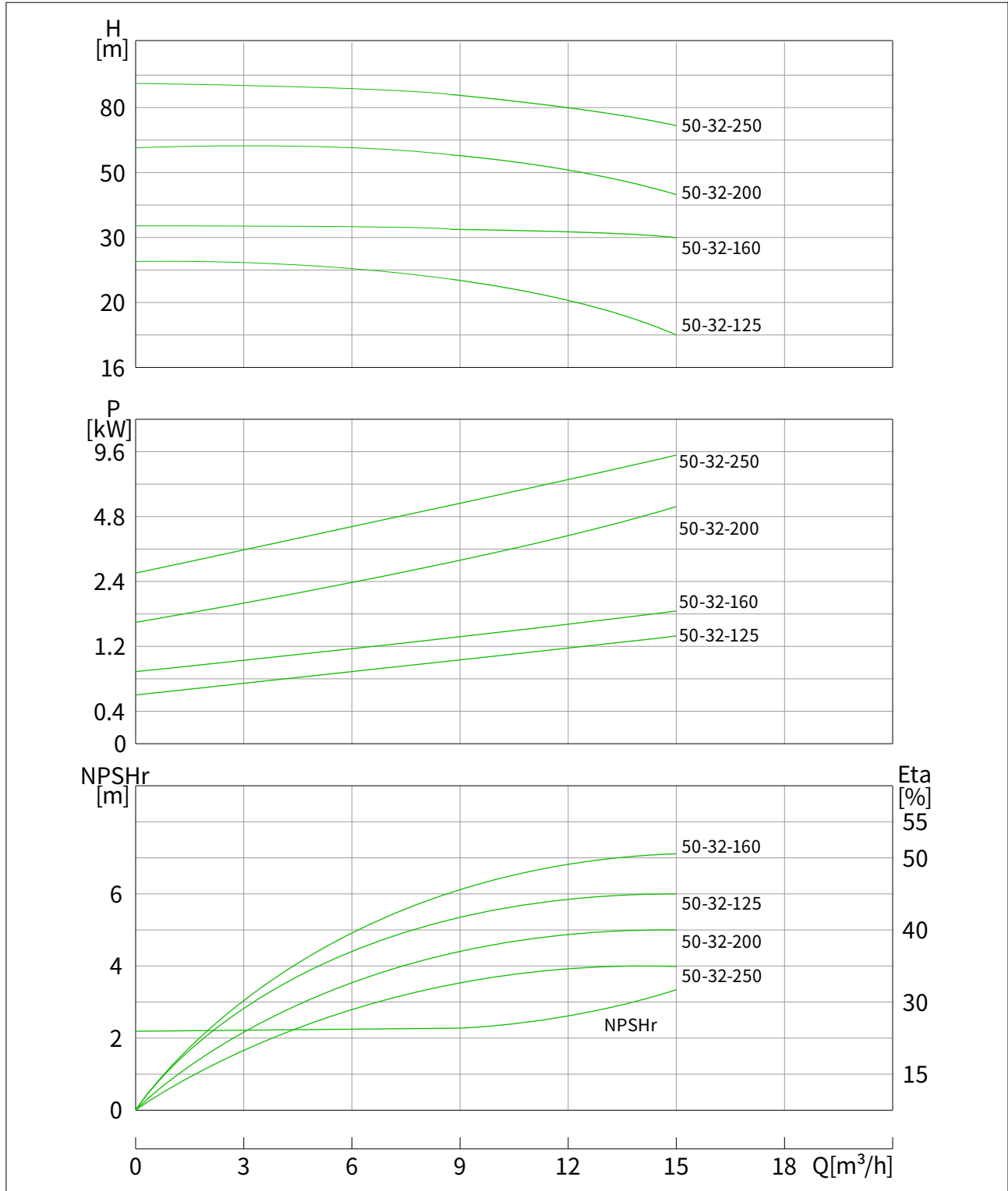
Parts and Materials

NO.	Parts	Materials	AISI/ASTM
1	Motor	/	/
2	Mechanical seal	Graphite / Silicon Carbide	
3	Injection-modeled pump head		ASTM25B+F26(F46)
4	Impeller	Steel + F26(F46)	ASTM570+F26(F46)
5	Pump casing	F26(F46)	/
6	Outlet flange	HT200	ASTM25B
7	Double-ended stud	Stainless steel 06Cr19Ni10	AISI304
8	O-ring	FPM	/
9	Seal gland	HT200	ASTM25B
10	Guarding plate	Stainless steel 06Cr19Ni10	AISI304
11	Base	HT200	ASTM25B

Performance Curves ASZ25/ASZ40

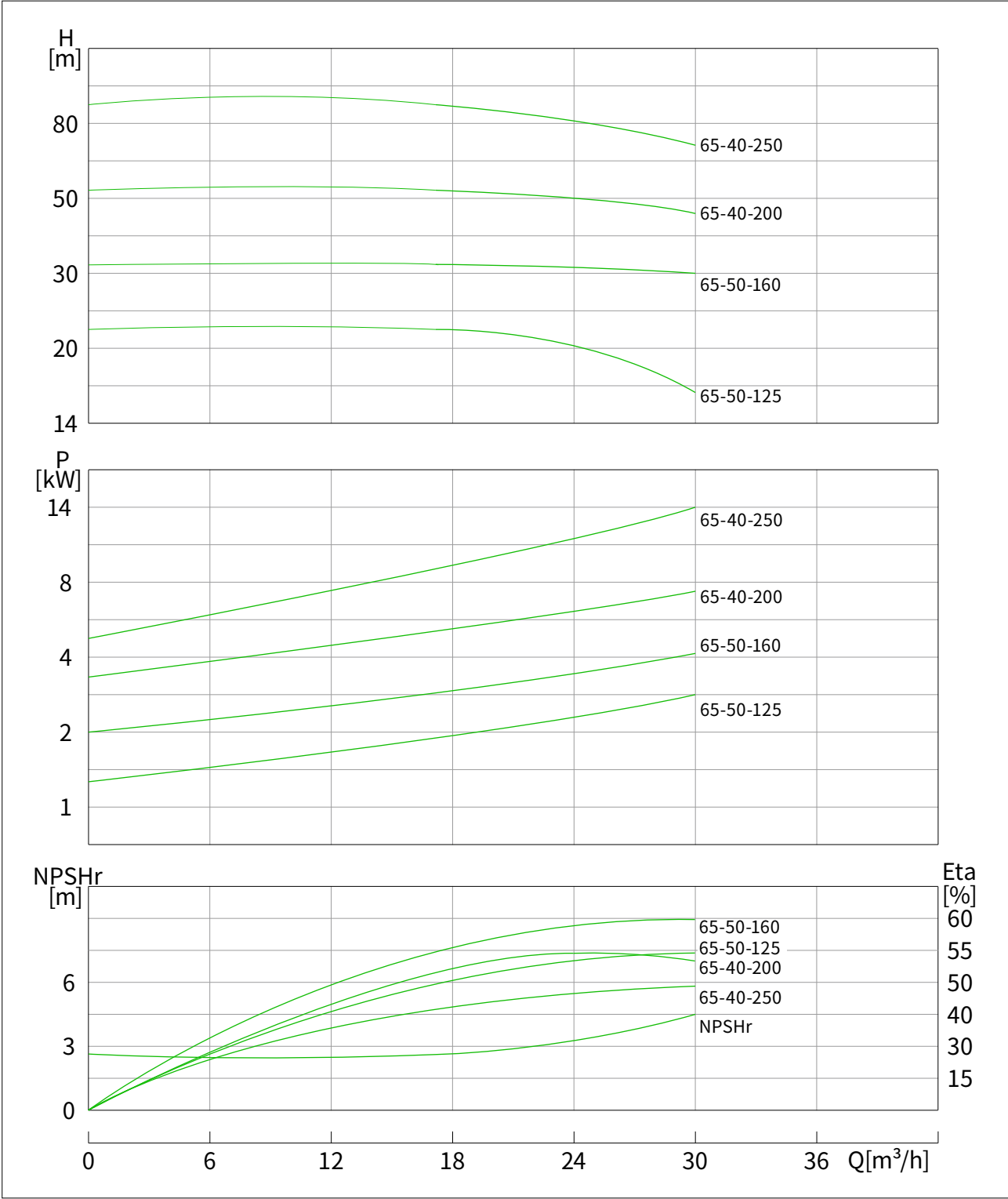


Performance Curves ASZ50

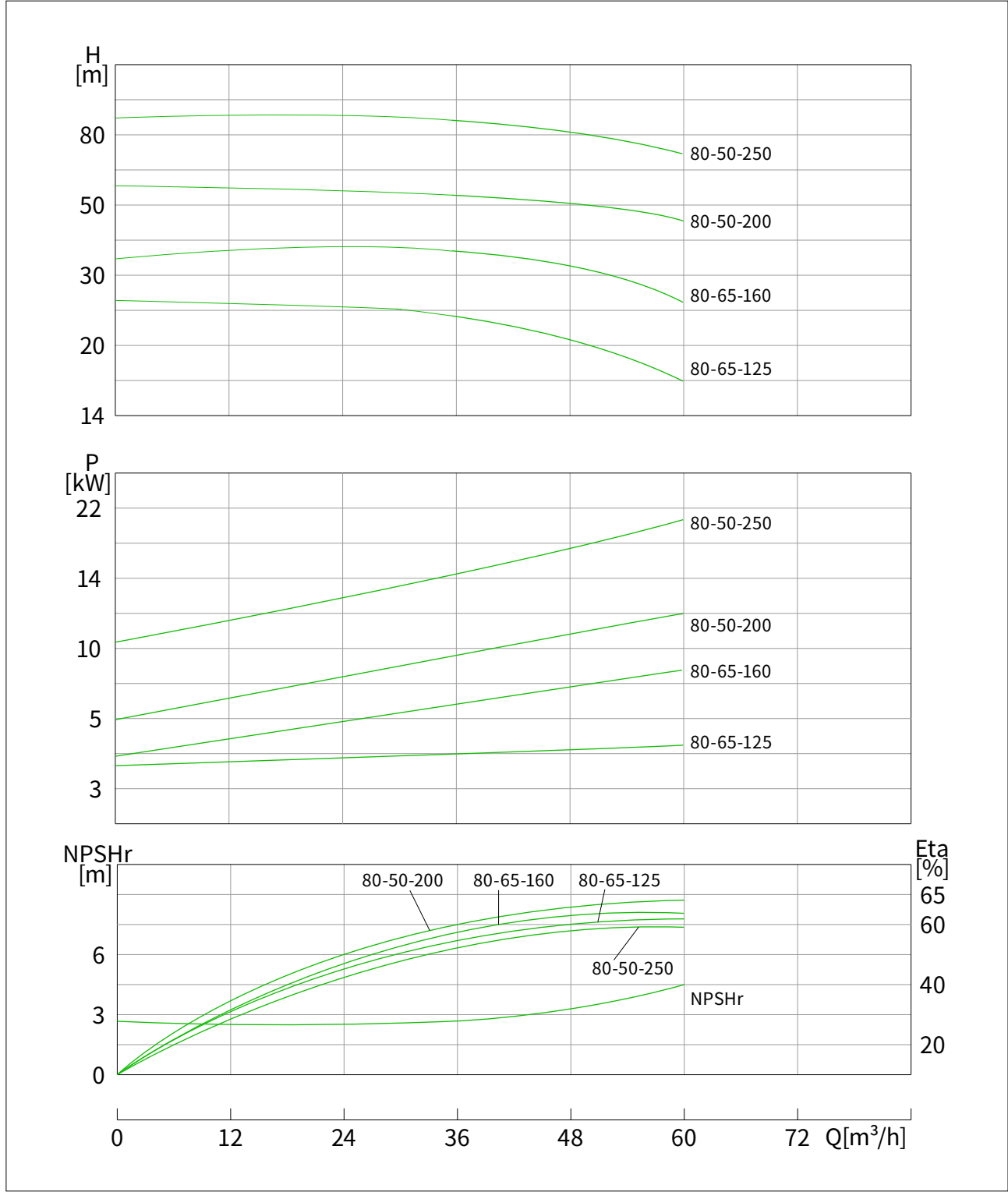




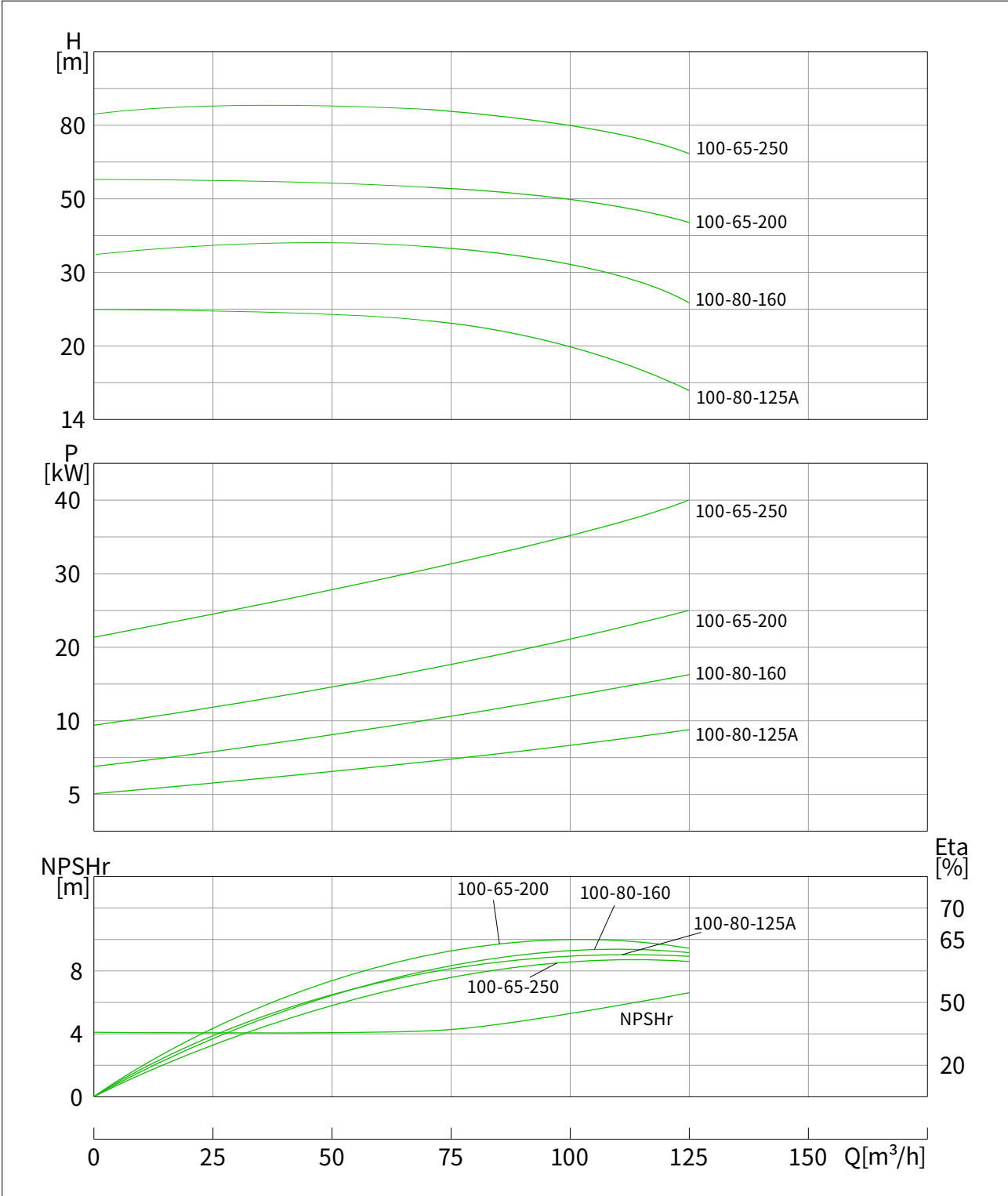
Performance Curves ASZ65



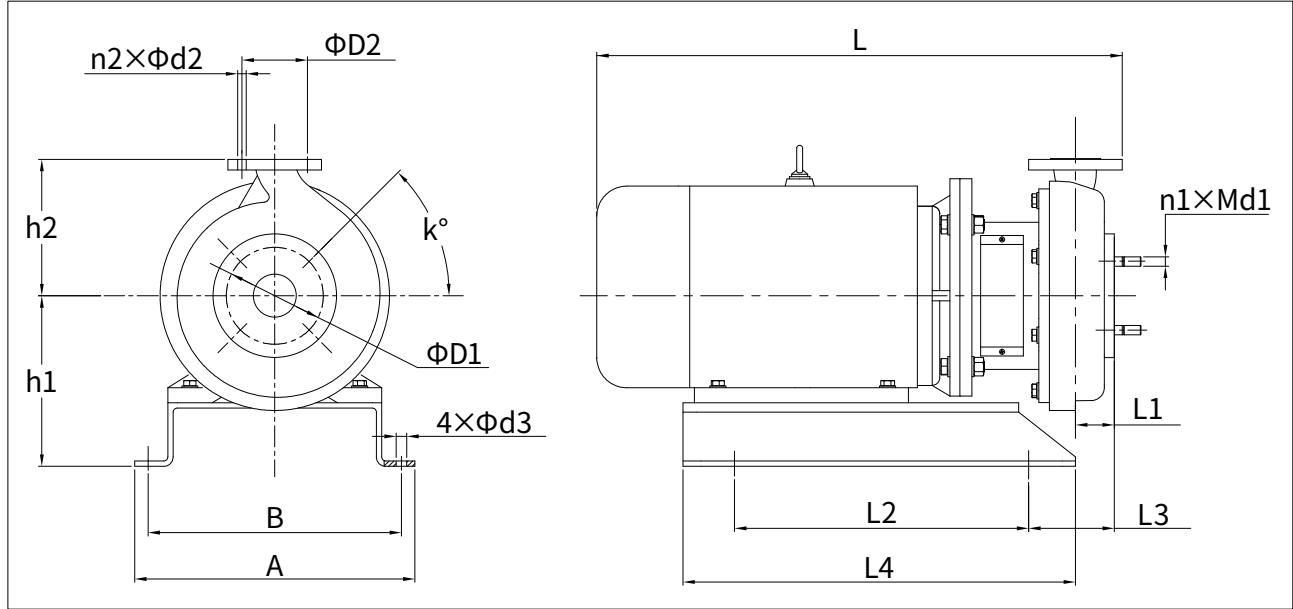
Performance Curves ASZ80



Performance Curves ASZ100



Installation Diagram



Model	Dimension(mm)																		
	L	L1	L2	L3	L4	D1	Inlet flange	n1	d1	k	h1	h2	D2	Outlet flange	n2	d2	A	B	d3
ASZ25-25-125	457	37	300	64	370	75	DN25/PN6	4	10	45	164	120	100	DN32/PN10	4	14	265	230	15
ASZ40-25-125	461	37	300	72	370	100	DN40/PN6	4	10	45	165	120	100		4	14	265	230	15
ASZ40-25-200	613	58	400	110	510	100		4	10	45	219	180	100		4	14	367	330	17
ASZ40-25-250	743	58	440	121	580	100	DN50/PN10	4	10	45	255	195	100		4	14	417	380	19
ASZ50-32-125	531	43	370	79	450	125		4	14	45	175	140	100		4	14	272	235	17
ASZ50-32-160	553	53	370	103	450	125		4	14	45	191	159	100		4	14	307	270	17
ASZ50-32-200	613	58	400	110	510	125		4	14	45	219	180	100		4	14	367	330	17
ASZ50-32-250	743	58	440	121	580	125	DN65/PN10	4	14	45	255	195	100		4	14	417	380	19
ASZ65-50-125	563	50	370	95	450	145		4	14	45	175	147	125	DN50/PN10	4	18	307	270	17
ASZ65-50-160	618	51	400	88	510	145		4	14	45	219	165	125		4	18	367	330	17
ASZ65-40-200	727	55	440	96	580	145		4	14	45	255	180	110	DN40/PN10	4	18	417	380	19
ASZ65-40-250	787	58	440	128	580	145	4	14	45	255	205	110	4		18	419	380	19	
ASZ80-65-125	631	52	400	88	510	160	DN80/PN10	4	14	45	219	162	145	DN65/PN10	4	18	367	330	17
ASZ80-65-160	750	57	440	97	580	160		4	14	45	255	186	145		4	18	417	380	19
ASZ80-50-200	797	57	440	110	580	160		4	14	45	255	195	125	DN50PN10	4	18	419	380	19
ASZ80-50-250	915	65	440	260	580	160		4	14	45	295	205	125		4	18	529	490	19
ASZ100-65-200	928	55	440	253	580	180	DN100/PN10	8	14	22.5	295	225	145	DN65/PN10	4	18	529	490	19
ASZ100-65-250	969	54	500	221	650	180		8	14	22.5	320	225	145		4	18	532	490	22
ASZ100-80-125	757	60	440	107	580	180		8	14	22.5	255	200	160	DN80/PN10	8	18	417	380	19
ASZ100-80-160	801	60	440	114	580	180		8	14	22.5	255	200	160		8	18	419	380	19